



TRAILWAYS CAMPS, INC.

www.trailwayscamps.org

Forward ...

Annual Report 2023/2024



VISION

We envision a community of uniquely created individuals in relationship with one another.



Jamie Senkeleski, Camp Director

MISSION

Enabling adults with special needs, and those who care for them, to grow their social, emotional and spiritual relationships.

Filling In Void Spaces ...

We know that 800-1000 young adults exit special education programs in Lee, Hendry, Glades, Charlotte, and Collier Counties each year. As they enter community life full-time, they join those who entered it in prior years. Job carving, training, and placement services are extremely limited. Day Activity providers have waiting lists for entrance. Socialization opportunities through participation in clubs, churches, community programs, and nonprofit organizations are limited – frequently because transportation and one-to-one support services are unavailable. These new entrants are rarely included in community-wide databases that feed resource planning. They enter with family caregivers who rarely experience overnight respite. These adults and their families age in place. As they age, they are often counted as part of community age groups – rarely are the supports needed for inclusion identified or addressed with resource commitments that enable connection and inclusion. Trailways Camp IS A BRIDGE!

- For Adults with special needs – because participation in healthy living activities is experienced.
- For Caregivers – because overnight respite refreshes and enables healthy living.
- For specialized service providers seeking solutions to service gaps.
- For Community partners – resource sharing stretches tight budgets.

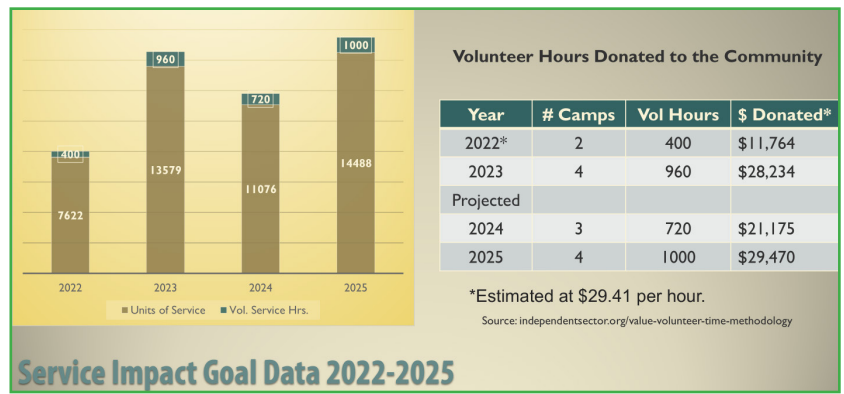
The “Joyful Spirit” Academy



The Bottom Line ...

- Relationship with Riverside Retreat remains secure into the future.
- The Board of Directors grew to ten members.
- The Advisory Committee grew to 10 members.
- The Board of Directors launched a Strategic Planning Process.
- Approved as 2025 Lee County United Way Partner.
- Trailways began participation in the Hendry/Glades County provider network.
- Outreach to underserved locations and subgroups enabled by addition of a staff position.
- Maintained and grew collaborative relationships with community partners and service providers.
- New office space opened for the team on Sanibel.
- Hundreds of adults participated in Trailways Camps sessions and events. Caregivers received support, respite, and peace in their hearts as they witnessed the joy. Volunteers received as much as they gave.
- Artistic creations activity initiated.
- Diagnostic labels didn't define who could participate.
- Age of adults was not used to define who can and who cannot.
- Adults with special needs grieving for the passing of loved ones had a place to receive comfort, support, and spiritual encouragement.
- Giving toward costs continued as voluntary gifts.
- 100% of campers, caregivers, staff and volunteers expressed a desire to "come back."
- Expenses \$242,122,
Cumulative Fund Balance \$57,743

TRAILWAYS Forward



Needs

- Camper Scholarships – To meet increased costs for nursing support, adaptive vehicles, increased food and activities.
- Program Growth – To add another 4 day, 3 night camp session, add a Fun Day session for campers on waiting lists to return.
- Celebration/Reunion Event Sponsorship – \$1000, \$2500, \$5000.
- Volunteers who service with their time and talents.

We invite you to join us.



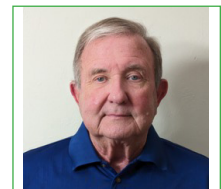
Our Board of Directors



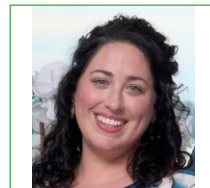
Sharon & Jerry Miller



Kristina Beuning



Tom Chambers



Megan Feeney



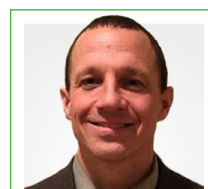
Lewis Miller



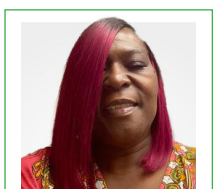
Fred Richards



Roberto Sanchez



Randy Stitt



Annie Williams

Giving Considerations

There are many ways to support the unmet needs of adults with disabilities and their families.

Gifts of Appreciated Securities

Please contact us for wiring instructions for your broker. For Trailways Camps, Inc. call 512-784-3879.

Over 72 years of age?

Please consider a donation as a Qualified Charitable Distribution (QCD) as a direct transfer of funds from your IRA. QCDs can be counted toward satisfying your required minimum distribution (RMD) as long as certain rules are met. Please consult your tax advisor. Call 512-784-3879.

Your Will or Trust, Your Legacy

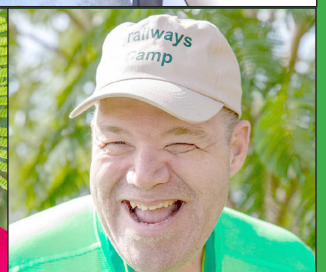
If you share in the same passion, please consider a legacy gift from your estate. Whether a one-time donation or an endowed gift to last in perpetuity or your chosen duration, the philanthropy professionals at Trailways Camp, Inc. in your will or estate plans.

Gifts in Kind

So many businesses in our community have donated their services, products and talent. We are so grateful to our Special Supporters. Have something to give? We'd love to include you.

Contact Us

- Donations to support camper scholarships, program growth, and celebration events; by credit card visit <https://www.trailwayscamps.org/give/>. A copy of our Major Gifts Policy is available upon request.
- To donate by personal check or QCD distribution send to: Trailways Camps, Inc., c/o Sharon or Jerry Miller
3502 Harbor Court, Fort Myers, FL 33908



Camp Director
Jamie Senkeleski

Advisory Committee:

Georgia Baker, Tim Barrett, Lee Bettenhausen, Jeff Blackford, Kimby Hegwood-Brett,
Paul Burke, Joan Gible, Edward Lamotta M.D., Mark Salvo, Kirk Williams



Special Thanks To These Camp Session Sponsors:



For more information, please contact:

Jamie Senkeleski, Camp Director • trailwayscampdirector@gmail.com

Trailways Camps, Inc. • P.O. Box 324 • Sanibel, Florida 33957

Phone: (941) 564-9861 • www.trailwayscamps.org

TRAILWAYS CAMPS, INC. IS REGISTERED WITH THE STATE OF FLORIDA PURSUANT TO CHAPTER 496, SECTION 496.405 OF THE FLORIDA STATUTES, A COPY OF THE OFFICIAL REGISTRATION (#CH661) and financial information may be obtained from the division of consumer services by calling toll-free (800-435-7652) within the state. Registration does not imply endorsement, approval or recommendation by the state. www.800HELPFLA.COM

Trailways Camps, Inc. is an exempt organization as described in Section 501 (c) (3) of the Internal Revenue Code - EIN:88-2828905

